

# Convergence Electrolytic Copper



## Convergence PC 700 and PC 800

Technic's convergence copper plating processes have excellent throwing power and produce a uniform deposit with excellent ductility and a fine-grained, equiaxed structure. These processes can do DC, and PPR. The additive system is extremely stable and completely analyzable.

The brightener molecule designed and manufactured by Technic provides both grain refinement and leveling of the deposit. Unlike other systems that utilize high levels of sulfur bearing additives to level rough topography, Technic's additive will provide excellent leveling.

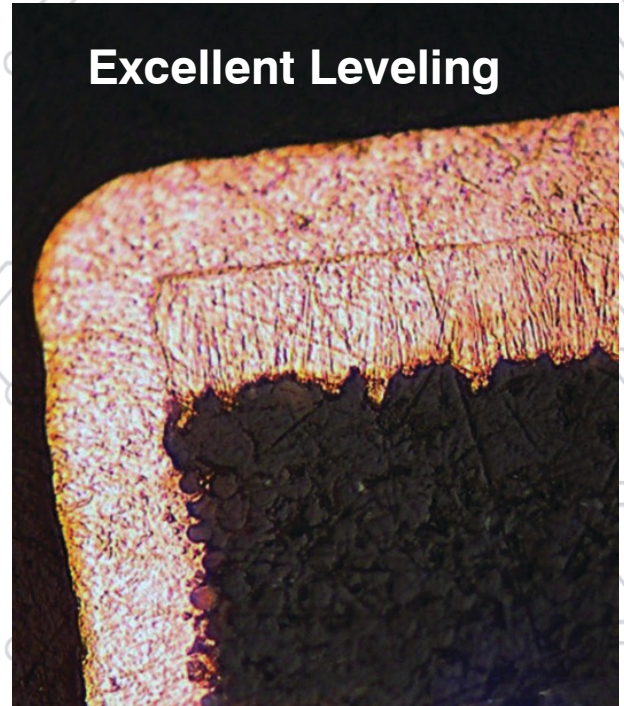
### Features

- Low consumption per amp-hour
- Fully analyzable (Technic EBA)
- Process adaptable, DC, or PPR
- Works with soluble and insoluble anodes

### Benefits

- Excellent leveling
- High elongation
- High tensile strength
- Passes multiple solder float
- Superior surface distribution
- Excellent throwing power
- Exceptional ductility
- Low stress

### Excellent Leveling



### Thermal Shock Conditions:

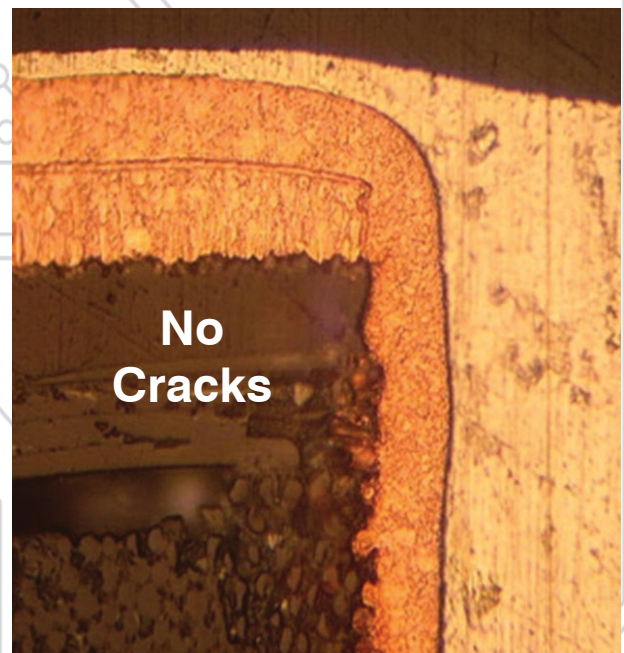
Temperature - 550°F (288°C)

Time - 10 second float

Cycles - 6 cooling to room temp after each float

Results - No failures observed

### No Cracks



# Technic Electrolytic Copper

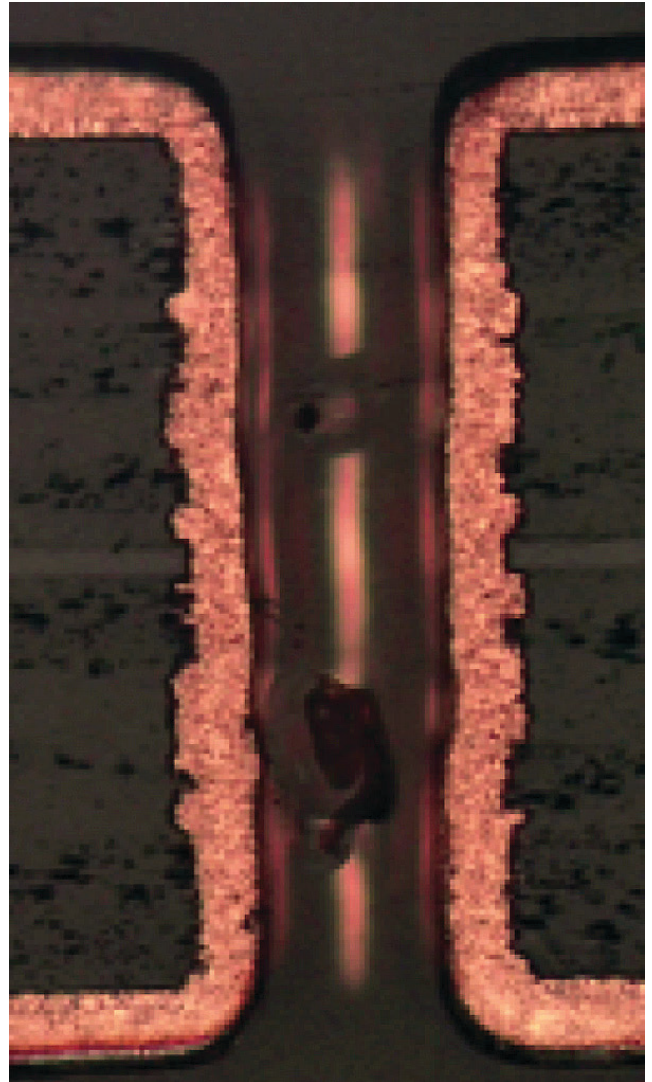
PC 700 30 ASF, DC using leveler  
8 mil hole/32 mil material  
100% to 101% throwing power

## Convergence PC 700

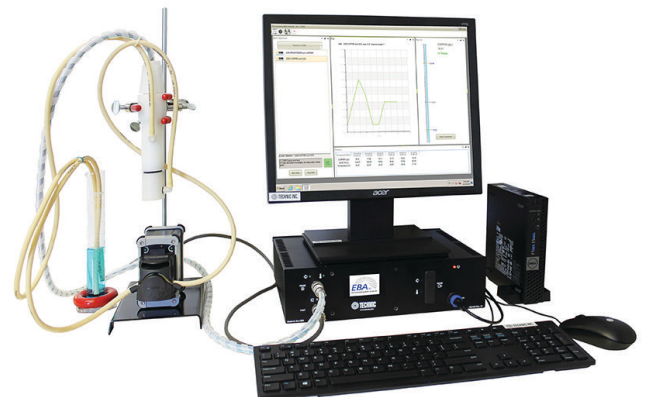
- Elongation: 18-33%
- Tensile strength: 40-50 KPSI
- Thermal shock: Pass 6 Cycle
- Cathode current density: 1-30 ASF
- Anodes: ISA or conventional
- Can do microvias and high-aspect-ratio
- Operates with DC power

## Convergence PC 800

- Elongation: 18-33%
- Tensile strength: 40-50 KPSI
- Thermal shock: Pass 6 Cycle
- Cathode current density: 2-40 ASF
- Anodes: ISA (*Technic Insoluble Anode System*) or Conventional
- For microvias and through holes filling
- For conforming plating of microvias and high-aspect ratio
- Performs well with DC or PPR



NOTE: To achieve optimal surface distribution and throwing power, solution movement and component composition must be optimized. Reach out to your Technic representative for an audit and recommendations.



Technic EBA (proprietary analytical control system)  
or CVS analyzable