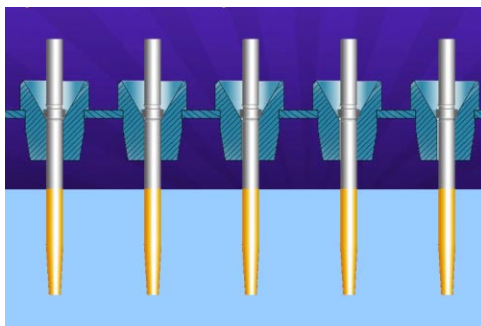
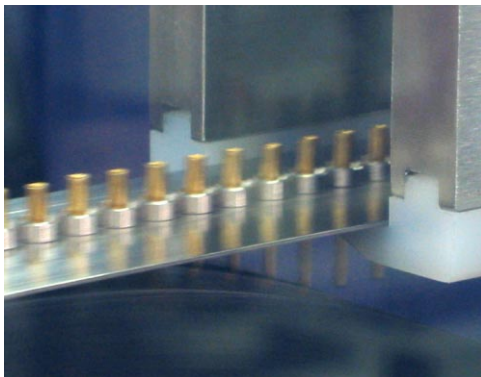
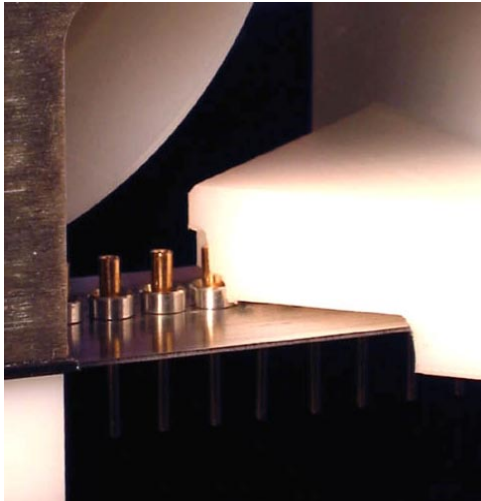


CDP-2000

Precision electroplating tool designed for high volume controlled depth plating of precious metals onto small loose parts, typically for pins or sockets with shoulders for the electronic connector industry.



CDP-2000 Features & Benefits

Compact

Small footprint with high volume output

Dependable

Highly reliable automated part feeding

Accurate

Precise controlled depth plating capabilities with outstanding part-to-part uniformity

Versatile

Patented transport belt design allows for a wide range of part configurations

Efficient

Deposited precious metal savings of up to 70%

Economical

Extremely low plating solution dragout to rinses

A Smart Investment

Short return on investment for precious metal applications



Technic Equipment Division
55 Maryland Avenue
Pawtucket, Rhode Island 02860
Tel: 401-728-7081
Fax: 401-722-1720
equipment@technic.com